



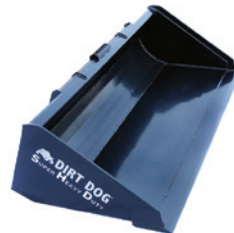
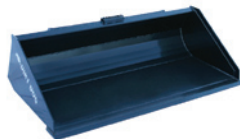
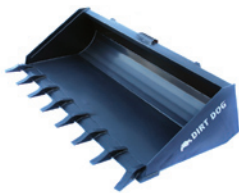
DIRT DOG®

Dirt Dog Skid Steer Buckets are Effective, Reliable and Durable.

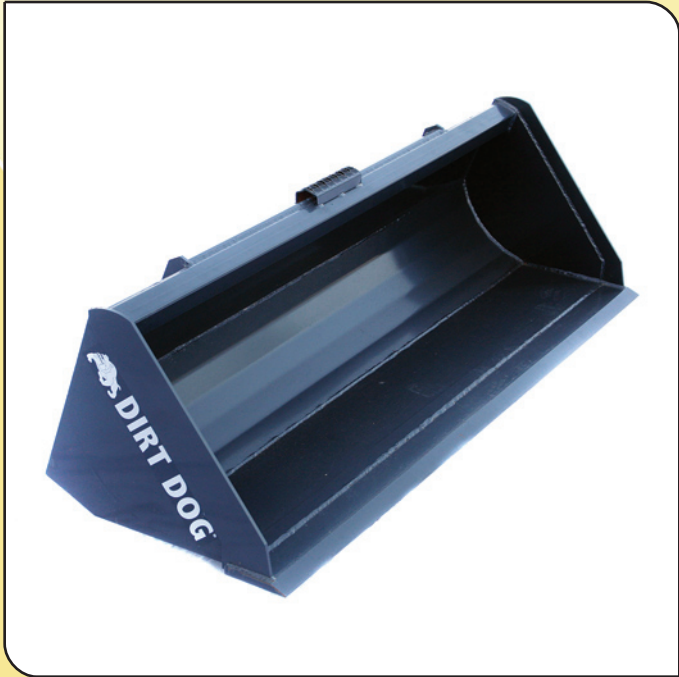
Our buckets offer the heavy duty features you depend on everyday to get the job done.
Choose Dirt Dog for superior equipment you can count on year after year.



Heavy Duty Skid Steer Buckets



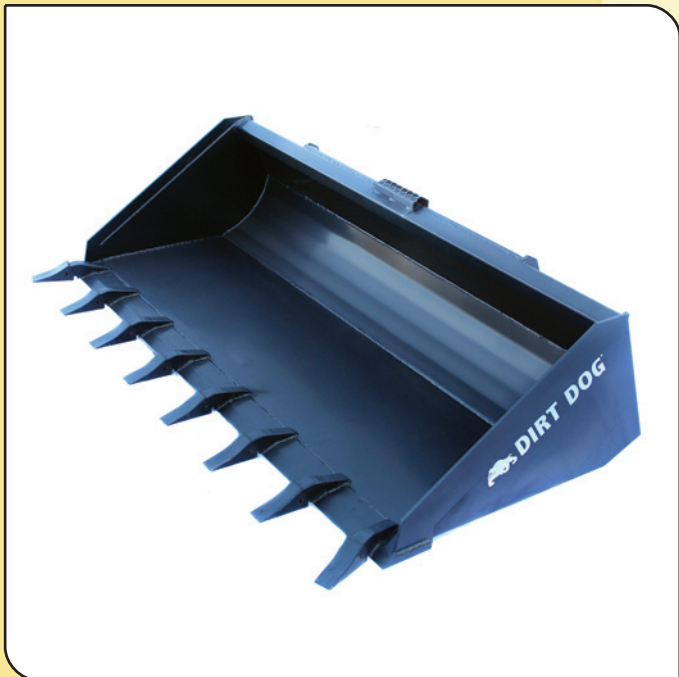
Dirt Dog makes heavy duty Skid Steer Buckets. It doesn't matter if you need a Low Profile Short Bottom or Heavy Duty High Capacity bucket, you can be sure that your Dirt Dog bucket will be tough enough to withstand the test of time. We pack heavy duty, high quality features into every bucket we make, so you can get hard work done fast.



LPSB

- Available with or without heavy duty weld on teeth
- Heavy duty, solid quick attach plate
- Solid tube design adds heavy duty strength

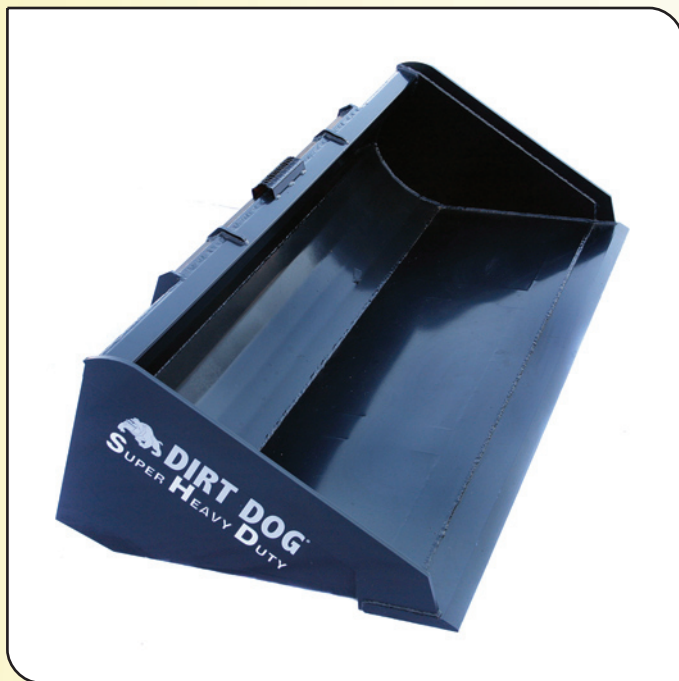
The **LPSB** is designed to be a heavy duty, general purpose bucket. Its short bottom design adds the cutting edge breakout force you need to handle tough jobs time after time.



LPLB

- Low profile long bottom design for maximum visibility
- $\frac{3}{4}$ " x 6" cutting edge standard for all sizes
- Available with or without heavy duty weld on teeth

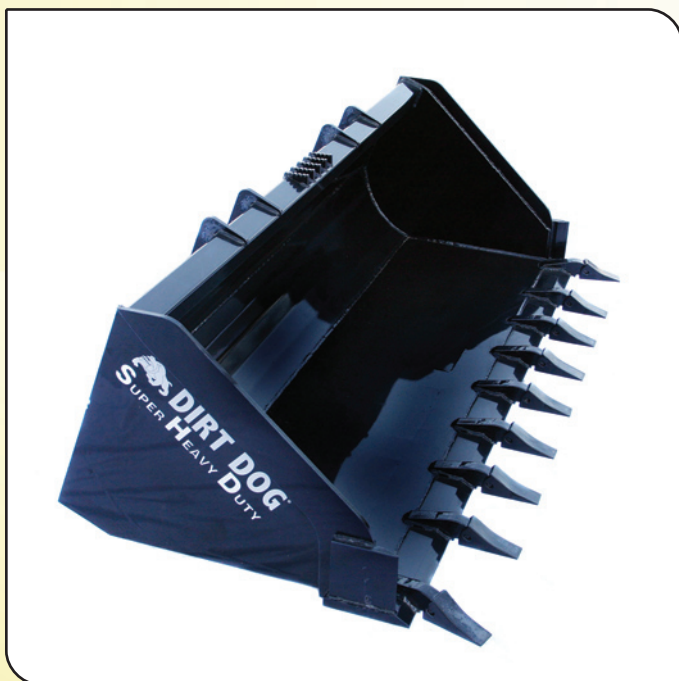
The **LPLB** combines **heavy duty** features with visibility, allowing you to see your cutting edge from the operator's seat. With the strength and visibility of this bucket, it's not hard to understand why professionals choose Dirt Dog's LPLB series for all of their rubber tired machines.



HDLPLB

- 1" x 8" high carbon cutting edge
- ½" side gussets
- Reinforced, one piece quick attach plate
- Available with or without heavy duty weld on teeth

The **HDLPLB** series was designed with today's high hp track machines in mind. The HDLPLB has the heavy duty features that allow it to stand up to the forces generated by modern Skid Steer track machines with the visibility of a **low profile long bottom** bucket. If you're tired of replacing buckets, go with Dirt Dog's HDLPLB.



HDHC

- High capacity
- 1" x 8" cutting edge + ¾" x 6" side cutting edges
- The heaviest skid steer bucket on the market
- Available with or without heavy duty weld on teeth

The **HDHC** series adds high capacity to the heavy duty features of the HDLPLB series. It's reinforced high capacity design provides years of service for today's biggest Skid Steer machines.

CHOOSE DIRT DOG FOR SUPERIOR EQUIPMENT YOU CAN COUNT ON YEAR AFTER YEAR.

Dirt Dog manufactures heavy duty equipment for hard working people. We offer a full line of 3 pt. hitch tractor and skid steer attachments. Our product line is always growing and developing, so you can get hard work done fast.

Visit our Web site for more information on all of our products at www.DirtDogMfg.com.

SKID STEER BUCKET SPECIFICATIONS

	LPSB	LPLB	HDLPLB	HDHC
Overall Depth	28"	39 1/4"	39 1/4"	37 5/8"
Overall Height	20"	20"	20"	25 7/8"
Overall Width	5, 5 1/2, 6, 6 1/2 & 7 ft	5, 5 1/2, 6, 6 1/2 & 7 ft	6 1/2 & 7 ft	6 3/4 & 7 1/2 ft
Useable Depth	22 1/2"	33 3/4"	33 3/4"	31 5/8"
Useable Height	15 1/2"	15 1/2"	15 1/2"	19 7/8"
Useable Width	59" (5 ft)	59" (5 ft)	77" (6 1/2 ft)	78 5/8" (6 3/4 ft)
	65" (5 1/2 ft)	65" (5 1/2 ft)	83" (7 ft)	86 5/8" (7 1/2 ft)
	71" (6 ft)	71" (6 ft)		
	77" (6 1/2 ft)	77" (6 1/2 ft)		
	83" (7 ft)	83" (7 ft)		
Roll Back Angle	20°	20°	20°	20°
Volume (Not Heaped)	8.2 ft ³ (5 ft)	12.25 ft ³ (5 ft)	16.50 ft ³ (6 1/2 ft)	21 ft ³ (6 3/4 ft)
	9 ft ³ (5 1/2 ft)	14.00 ft ³ (5 1/2 ft)	17.75 ft ³ (7 ft)	23 ft ³ (7 1/2 ft)
	9.8 ft ³ (6 ft)	15.25 ft ³ (6 ft)		
	10.6 ft ³ (6 1/2 ft)	16.50 ft ³ (6 1/2 ft)		
	11.4 ft ³ (7 ft)	17.75 ft ³ (7 ft)		
Weight (With Teeth/No Teeth)	484/434 (5 ft)	617/547 (5 ft)	777/718 (6 1/2 ft)	797/731 (6 3/4 ft)
	512/462 (5 1/2 ft)	645/575 (5 1/2 ft)	820/754 (7 ft)	877/811 (7 1/2 ft)
	540/475 (6 ft)	673/593 (6 ft)		
	568/503 (6 1/2 ft)	703/623 (6 1/2 ft)		
	596/521 (7 ft)	729/639 (7 ft)		
Number of Teeth	7 (5 ft)	7 (5 ft)	8 (6 1/2 ft)	9 (6 3/4 ft)
	7 (5 1/2 ft)	7 (5 1/2 ft)	9 (7 ft)	9 (7 1/2 ft)
	8 (6 ft)	8 (6 ft)		
	8 (6 1/2 ft)	8 (6 1/2 ft)		
	9 (7 ft)	9 (7 ft)		
Horse power (Rubber Tire/Track)	100 hp /80 hp	100 hp /80 hp	120 hp /100 hp	120 hp /100 hp
Paint options	BL	BL	BL	BL

R & R* = Reversible and Replaceable

Powder coat paint options

BL = BLACK

www.DirtDogMfg.com

Dirt Dog Manufacturing

P 706.335.4647

F 706.335.1850

2405 US 441 South

Commerce, GA 30529